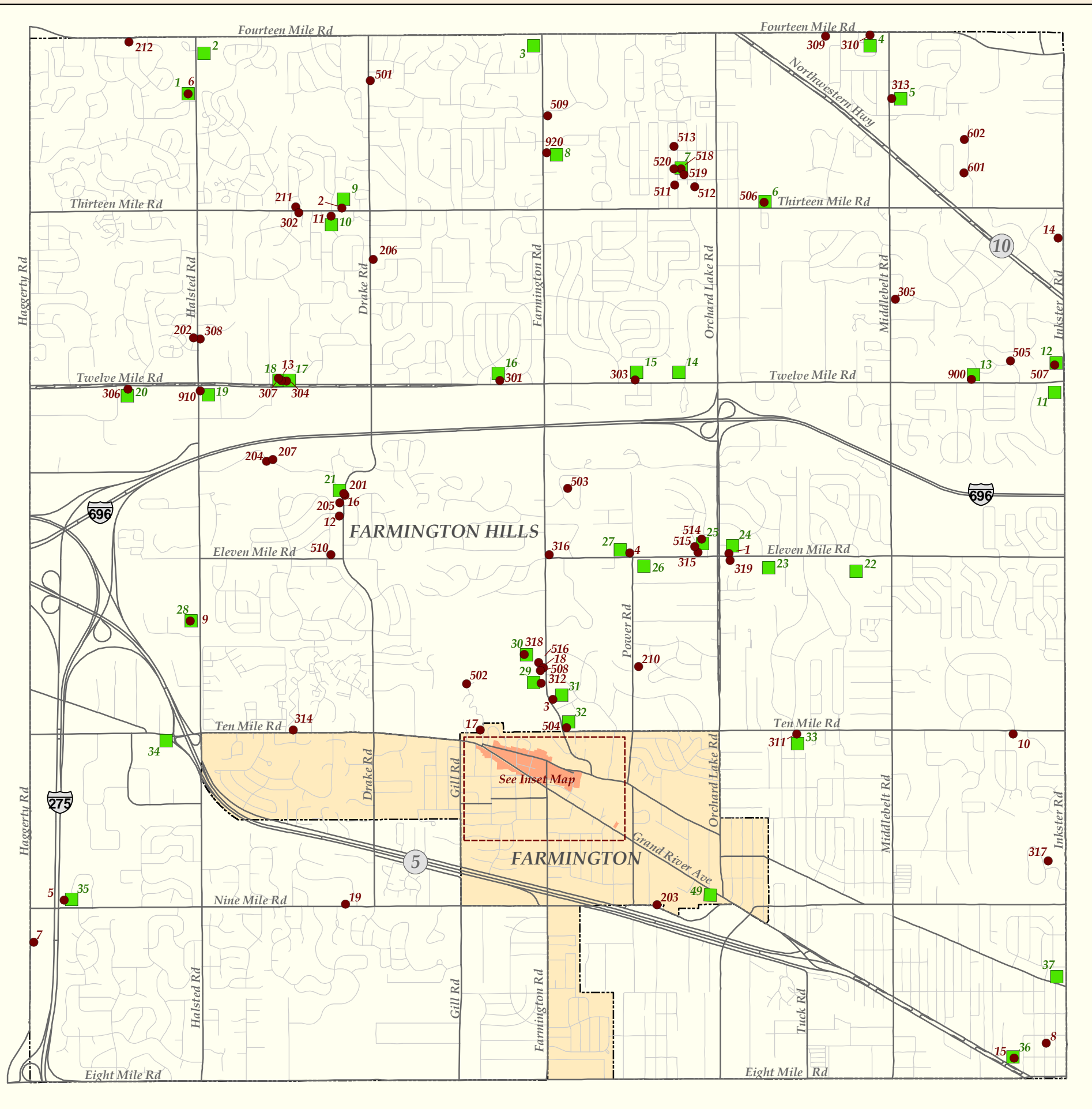


Historic Farmington & Farmington Hills Settled 1825



Farmington Hills Historic Districts

Greek Revival Buildings

1. Royal Aldrich House
2. John Garfield House
3. Lemuel Botsford House
4. Philbrick Tavern
5. Stephen Yerkes - Rogers House
6. Theron Murray House
7. David Simmons House
8. Clarenceville Blacksmith House
9. Universalist Unitarian Church
10. Silas Green House
11. Eber Durham House
12. Stephen Jennings House
13. John Dallas Harger House
14. Cornelius Davis Home
15. Botsford Inn
16. Mark Arnold House
17. Orville Botsford House
18. Palmer Sherman House
19. Alonzo Sprague House

Farmhouses - 1860 to 1900

301. Lawrence Simmons House
302. Myron Crawford House
303. Samuel Davis House
304. John Pettibone House
305. Ely Stodgel House
306. Michael Marlett-Charles Wixom House
307. Hamilton Jones House
308. The Halsted Apple Barn
309. The Cooney House
310. Ward Eagle House
311. John Glick Home & Pottery
312. Sherman - Goodenough House
313. The Fractional School
314. William Gates House
315. Samuel Locke House
316. The Ledyard-Cowley House
317. The Franklin Comstock House
318. The Barn at Heritage Park
319. Bade Hired Man's House

Other Buildings - Post 1900

501. Springbrook Farmhouse
502. Marcus Burroves House
503. The Edward Moseman House
504. Kirby White House
505. Richard Cudmore House
506. Glen Oaks Country Club
507. Sarah Fisher House
508. Spicer House
509. The Howard House
510. Frank Steele House
511. Edward Beals House
512. Oaklands Sub Model House
513. Henry Bach House
514. James Cain House
515. Pasadena Park Bungalow
516. Spicer House Stables
518. Edward Chene House
519. Gould House
520. Archibald Jones House
601. Jack Beckwith House
602. Arthur Beckwith House

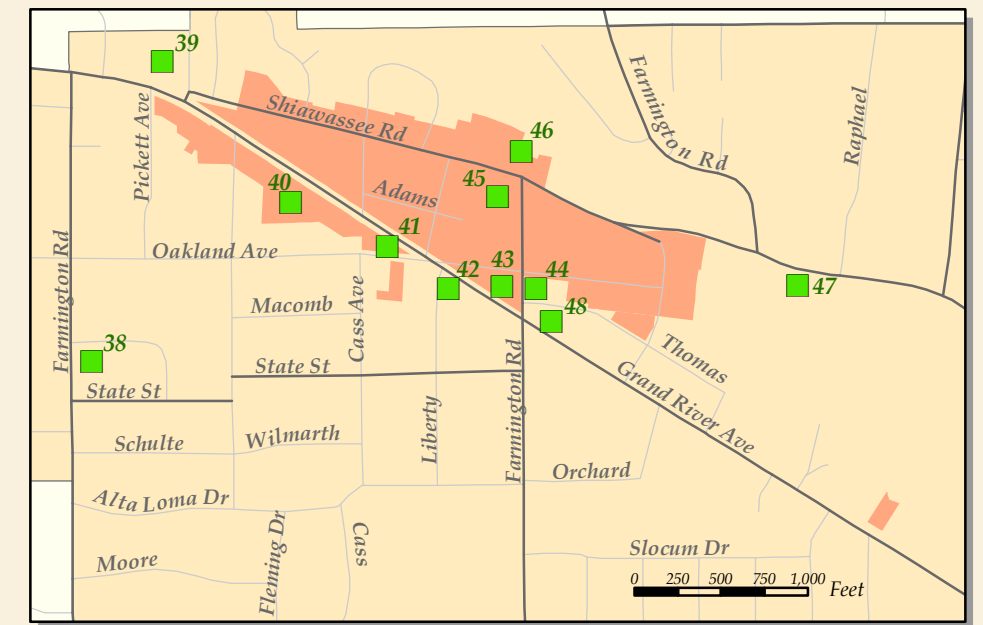
Historic Sites

900. East Farmington Cemetery
910. West Farmington Cemetery
920. North Farmington Cemetery

Pre-Civil War Buildings

201. The Miller's House
202. Boorn - Halsted House
203. The Parsonage
204. Eri Prince House
205. Elliot Sprague House
206. The Drake House
207. Nehemiah Hoyt House
210. Dennis Conroy House
211. John Cox House
212. Addis Emmett Green House

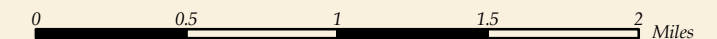
Farmington Historic District



Inset Map of Downtown Farmington

Historic Marker Sites

- | | | |
|---------------------------------------|---|---|
| 1. Theron Murray House | 18. The Harger House | 35. Stephen Yerkes Rodgers House |
| 2. Minnow Pond | 19. West Farmington Cemetery | 36. The Botsford Inn |
| 3. North Farmington | 20. Charles Wixom House | 37. Shiawassee Indian Trail |
| 4. Ward Eagle Home | 21. Sleepy Hollow | 38. Quaker Burial Ground |
| 5. Fractional District School | 22. Nardin Park United Methodist Church | 39. Oakwood Cemetery |
| 6. Glen Oaks | 23. Freedom Acres | 40. Governor Fred M. Warner |
| 7. The Chene House | 24. Aldrich House | 41. City of Farmington Original Historic District |
| 8. North Farmington Cemetery | 25. Pasadena Park | 42. First Quaker Meeting |
| 9. John Garfield House | 26. Where Farmington Began | 43. Farmington Masonic Temple and Township Hall |
| 10. Eber Durham House | 27. The Philbrick Tavern | 44. Heaney - Sundquist Funeral Home |
| 11. Buckhorn Corners | 28. Universalist Church | 45. Farmington's First Post Office |
| 12. St. Vincent & Sarah Fisher Center | 29. The Longacre House | 46. The Village Center |
| 13. The Utley Cemetery | 30. Spicer House | 47. The Potawatomi Indians of Farmington |
| 14. McCabe Funeral Home | 31. Lemuel Botsford House | 48. Farmington's Disastrous Fire |
| 15. Samuel Davis House | 32. Kirby White House | 49. Detroit United Railway |
| 16. Lawrence Simmons House | 33. The Plum House | |
| 17. The Pettibone House | 34. The Walker/Wixom Tavern | |



SOURCE: City of Farmington Hills GIS, 2010

