

FARMINGTON HILLS PUBLIC art PROGRAM

PRESENTED BY:
City of Farmington Hills
Special Services Department
Cultural Arts Division

MORE INFO:
248-699-6712 or 6709

ABOUT THE PUBLIC ART PROGRAM

The Public Art Program was initiated in 2010 to enhance the newly renovated Farmington Hills City Hall. The program brings art into our daily lives and humanizes and invigorates City Hall by generating conversation, cultivating inspiration, and contributing insight.

The artwork is on loan to the City for the next two years, featuring work from 66 talented artists from Farmington Hills and 25 surrounding communities.

The City gratefully acknowledges the artists who have so generously loaned their work to further enhance the atmosphere of City Hall for visitors and employees.

FARMINGTON HILLS CITY HALL



31555 W. Eleven Mile Road, Farmington Hills, MI 48336

Farmington Hills City Hall is an innovative facility balancing functionality with sustainability and pleasing aesthetics. With its efficient layout, minimalist finishes and concrete floors, the building offers a sleek design while acting as a welcoming host to the nearly 60,000 annual visitors, citizens, and staff.

The renovations give new life to the previously outdated City Hall making it a LEED® (Leadership in Energy and Environmental Design) Gold Certified state of the art, sustainable facility. City Hall is honored that regional prominent artists choose to display their work in our building.

INTERESTED IN PURCHASING ARTWORK
FROM THIS EXHIBIT?

-or-

WOULD YOU LIKE TO FIND OUT HOW TO
PARTICIPATE IN THE PUBLIC ART PROGRAM?

CALL THE CULTURAL ARTS DIVISION FOR INFO:
(248) 699-6709

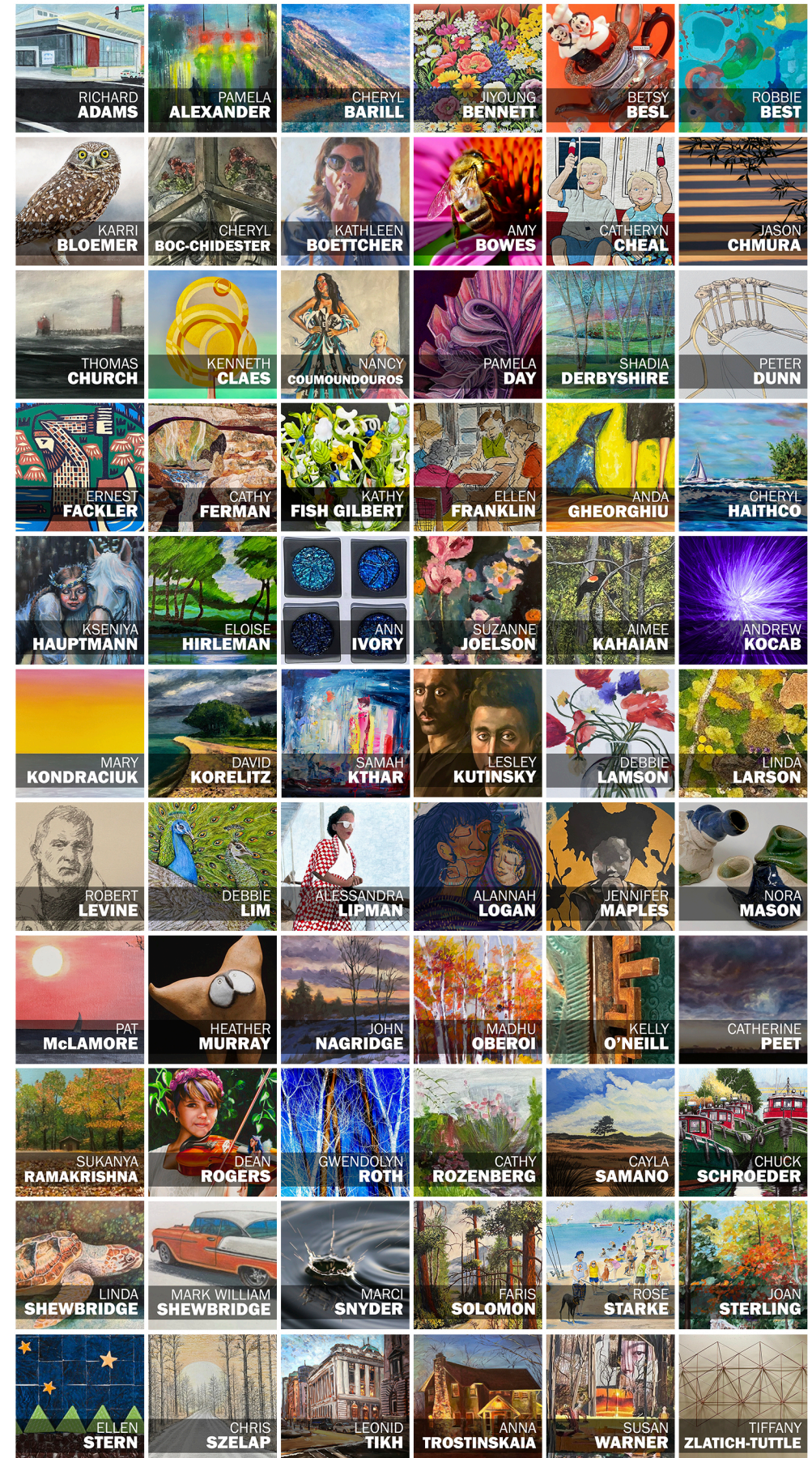
All work will remain on display through November 2027.

NFS = Not for sale
POR = price on request

The Farmington Hills Public Art Program is presented by
the Farmington Hills Special Services Department
Cultural Arts Division



FARMINGTON HILLS 2026-2027 PUBLIC ART PROGRAM



Presented by The Farmington Hills Special Services Department's Cultural Arts Division

